

THE WOMAN'S CLUB OF WINTER PARK, INC.

DECEMBER 2016 HIGHLIGHTS



President: Cynthia Gerken
President Elect: Judy Allen
Club Office: 407-644-2237

Email: info@womansclubofwinterpark.com

President's Message



Dear Ladies of the Woman's Club,

Another holiday season has arrived. It is a time to reflect on the year that is passing and the New Year that is about to arrive. This is the season of giving. In December, we have a lot of activities for our club members. In addition to the programs mentioned in this Highlights we have opportunities to serve our club. Marching in the Winter Park Christmas Parade is a holiday tradition. It is our opportunity to show our presence in the community. Also, each year we have an opportunity to shop for items for the children who live in housing subsidized by the Winter Park Housing Authority. It is a privilege to make Christmas memories for these children. We also have an opportunity to raise funds for our Charitable Giving Committee by donating baked goods or crafts for sale at our Christmas luncheon on December 8.

It is also the time for giving monetary gifts. Both the Woman's Club of Winter Park and our Scholarship Fund are 501(c)3 organizations. Each Thursday in December our Silver Bowl will be available for any donation you wish to make. If you choose, you may donate to our Scholarship Fund, designating it for the Capital Fund or the current year or a combination of both. We will also accept donations for our Charitable Giving account, our Preservation Fund, or for our House operating account. You will receive a letter acknowledging your tax-deductible gift and our gratitude for your generosity in supporting our club.

Finally, coming in 2017 we look forward to celebrating our 102nd birthday. Our Founder's Event will be held on January 19, 2017, so we ask you to mark the date and send your reservation for an evening of wonderful food and entertainment.

Wishing all of you the Peace of the Christmas Season and a Happy and Healthy New Year.

Cynthia



DECEMBER PROGRAMS

Thursday, December 1st @ 2:00 p.m.

Joseph Bostwick, Baritone and Professional Actor

Joseph Bostwick's repertoire includes baritone arias from operas in Italian, French, and German; sacred, liturgical music in Latin, Greek, and Hebrew; as well as the Great American Songbook: the "standards" of popular music from the twentieth century. Our program will be varied, focusing on Songbook "standards" from Hollywood and Broadway, interspersed with very select, brief examples of baritone arias from Grand Opera. You will not want to miss this program.

Christmas Parade, December 3!

We need lots of ladies to walk in the annual Winter Park Christmas Parade. It's a slow walk or you can ride in the Miles' convertible. Meet at 9 am on Whipple Avenue, which is one block south of New York Ave. We need walkers to carry our banner, so come out and support our club.

Thursday, December 8th @ 11:30 a.m.

CHRISTMAS LUNCHEON (Form is attached in back of Highlights)

Thursday, December 15th @ 6:00 p.m.

SCHOLARSHIP EVENT

We will not meet on December 22 & December 29th

Merry Christmas & Happy Hanukkah

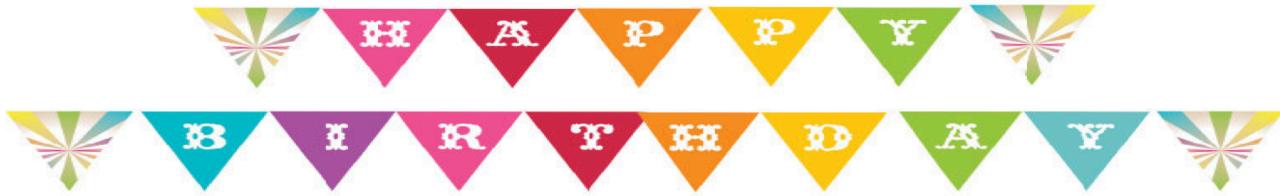
Save the Date...

To Celebrate and Honor
Our 2016
Scholarship Recipients

Scholars' Reception
December 15, 2016
6-8 P.M.
Woman's Club

Gift Cards

The Scholarship Committee is again planning to feature a drawing for Gift Cards on a decorated Tree during the Scholarship Reception on December 15, 2016. We would greatly appreciate any Gift Cards that you might like to donate for our drawing; please contact Sharyn Jontz or Arlene Bridges if you are interested! Thank you in advance for your kindness in supporting our efforts.



Wishing a Happy Birthday to:

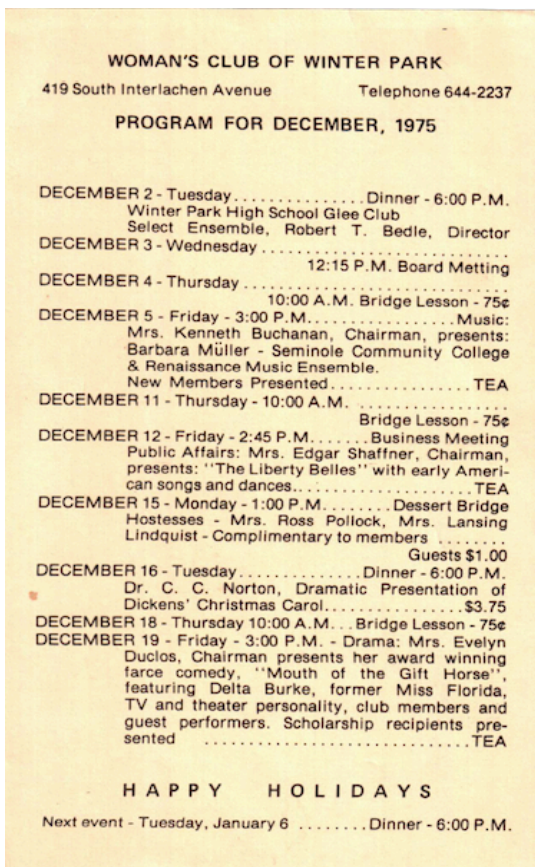
Karen Berg 12/29
 Ginger Campion 12/29
 Beverly Cox 12/27
 Rita Sue Miller 12/12
 Susie Stone 12/8
 JoAnn Walker Ralston 12/12

Karen Buchan 12/9
 Lauren Clark 12/21
 Barbara Hughes 12/31
 Carmen Muniz 12/25
 Frances Stultz 12/12

Christine Bush 12/31
 Susan Costin 12/26
 Pat Miller 12/25
 Julia Rankin 12/26
 Jane Tims 12/23

Did You Know? By Kim Mould

While modern in their desire to step outside their traditional spheres, the members of the Woman’s Club of Winter Park have, among other things, exemplified the deep appreciation held by clubwomen for quality artistic expression. In 1966, the Woman’s Club elected as its President an individual that reflected all the charm of a “Southern Lady,” the deportment of a society matron, and the sparkling personality of a New York diva, Evelyn Cole Duclos (1966 – 1968). As an active member, Mrs. Duclos’ desire to indulge in her love of the theater, while employing her theatrical talents, enabled her to provide the Woman’s Club with an energetic, provocative, and highly entertaining theatrical program. If the club needed a play, skit, or reading for a theatrical production, she wrote one. From the Woman’s Club membership, she recruited actors, stage hands, costume designers, and an appreciative audience.



A member program card, found in the Woman’s Club of Winter Park Archives from December, 1975, documents two theatrical events held during the holiday season. One Christmas dinner event, on December 16th, highlighted a dramatic presentation by Dr. C. C. Norton of Dicken’s Christmas Carol. The cost was \$3.75. On December 19th, at a tea social gathering, Evelyn Duclos, Chairman, presented “her award winning farce comedy, ‘Mouth of the Gift Horse,’ featuring Delta Burke, former Miss Florida of 1974, TV and theater personality, club members and guest performers.” As advertised on a December 11th newspaper clipping, the scholarship appointees were introduced to the members, and then the members and their guests enjoyed the blessings of the season with their annual Christmas Tea.



Play written by Evelyn Cole Duclos presented at the Club House - December 19, 1975 (at the Annual Scholarship Tea) starring Delta Burke, Miss Florida of 1974.

On behalf of the Scholarship Committee, it is a pleasure to introduce the last four 2016-2017 scholar recipients to you, the membership....

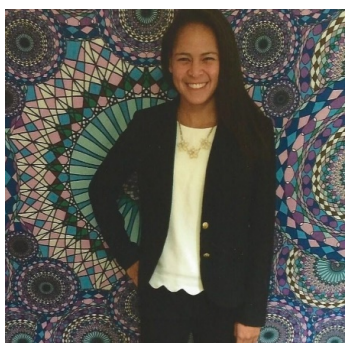
We hope you will join us on Thursday, December 15, 2016, from 6-8 pm at The Woman's Club to meet them in person at our Scholars' Reception!

By Barbara Hughes, Chair



Alex Scheiner is entering second year at UCF. He is continuing to pursue a Bachelor's in computer science. His goal is to complete his Bachelor's and then continue into a Masters' Program called FIEA (Florida Interactive Entertainment Academy). FIEA is a graduate video game design school that offers an accredited master's degree in interactive entertainment. He is also considering adding a minor in Digital Media.

Gregory Seel is a Florida State sophomore majoring in Physics. Throughout his senior year in high school, he did several gigs as a solo jazz musician. Presently he is a member of FSU's campus Blues Band, playing saxophone as well as singing and playing guitar. Last year as a freshman Gregory did research on the mechanics of stars in the lab of Dr. Thomas Plewa which was not a traditional lab, but one that utilized computer programming with a code called MESA which simulates and analyzes the development of stars throughout their life. This year Gregory is taking a class on modern physics under Dr. Harry Prosper who regularly does research at CERN in Switzerland and Gregory again finds himself using computer code. Gregory and a group of other students were assigned a group research project on quantum physics under Dr. Prosper. In addition Gregory has been one of twenty-five Presidential Scholars for the past two years; these scholars started a partnership with the Carter-Parramore Academy (CPA) in Gadsden county to tutor students. This year this same group of scholars brainstormed and planned CUSP (College for Unconquered Students Partnership) Program to guide ten students from CPA toward their dream schools.



Mariah Trainor is a sophomore Accounting Major at Assumption College. Mariah has been on the Dean's List and Athletic Honor Roll. She has become a member of the NCAA Division II cross country/track and field team which she tried for the first time; she worked her way up to a 10th ranking out of her 25 teammates. Mariah has been busy this year participating in a series of canned food drives with "Haven from Hunger" as well as hosting and forming a 5K run to raise money for "First Descents," a non-profit cancer foundation. Last semester Mariah's goal was to improve her GPA which she succeeded in doing with a 3.8 GPA. Eventually her goal is to become a Certified Public Accountant.

Angela Zhu is a sophomore at the University of South Florida in Tampa. Angela is in Biomedical Sciences and Music Studies. She is currently in the Provosts' Scholars Program which holds scholars to graduate within eight consecutive semesters with each summer being a semester. Not only is Angela on a fast track academically, but she also is active at the Moffitt Cancer Center - Volunteering - MRI, Research, Pharmacy; in addition to being involved in MIND (Music Branch) and PAMSA.



Woman's Club of Winter Park, Inc. Scholarship Donation Form
As of November 2, 2016

The second paragraph of the Scholarship Committee Investment Policy has recently been amended by the Woman's Club of Winter Park, Inc. Board of Directors on November 2, 2016, as recommended by the Scholarship Committee. The second paragraph will now read:

"Donors to the Scholarship Fund shall have the choice of placing their donation(s) in a capital fund in perpetuity with only income from these invested funds to be used for scholarships **OR** donors may choose to designate to have all or part of their donation(s) be utilized for scholarships in the current fiscal year. If no designation is indicated, then the donation(s) will automatically default to be placed in the capital fund in perpetuity and therefore only the income from these invested funds shall be utilized for scholarships." Therefore, you as a donor may choose one of the following designations for your generous donation. Please place a check on the line you would like to select.

Donation amount_____

____ Total donation to be deposited in the Capital Fund in Perpetuity.

____ Total donation to be deposited to be utilized towards scholarships for the current fiscal year.

____ Donation to be divided between the Capital Fund AND towards scholarships in the current fiscal year.

_____ Amount towards Capital Fund

_____ Amount towards scholarships for current
fiscal year

Donor Name: _____

Donor Address:_____

Date of Donation: _____



Join us for our

Holiday Luncheon

December 8, 2016

*Featuring our popular annual
Holiday Bake Sale and Gift Shop
Sale begins at 11:00 - Social Hour at 11:30*

Lunch served at Noon

\$25.00 per person - Guests welcome!

Deadline for Reservations - Friday, December 2nd

Payment must be received by deadline to insure your reservation

RSVP by Friday, December 2nd to:

Carol Nawrocki 535 N. Interlachen #202, Winter Park, FL 32789

Make checks payable to The Woman's Club of Winter Park, Inc.

Name: _____

Guests: _____

Seating Request: _____

Total Payment: _____



The Woman's Club Cabaret

Presents:

Music Through the Ages

*You are invited to celebrate the
102nd Founder's Day of
The Woman's Club of Winter Park
in our restored clubhouse at the corner of Lyman and Interlachen in
Winter Park.*

*January 19, 2017 6:00 - 8:00 pm
Dinner and Entertainment \$35.00 per person
Black and white attire encouraged.*

*RSVP by Friday, January 13 to Bette Blanchfield,
700 Melrose Avenue, Apt. J-23, Winter Park, FL 32789
Make checks payable to The Woman's Club of Winter Park, Inc.*

Name _____

Guests _____

Seating Request _____

Total Payment _____